



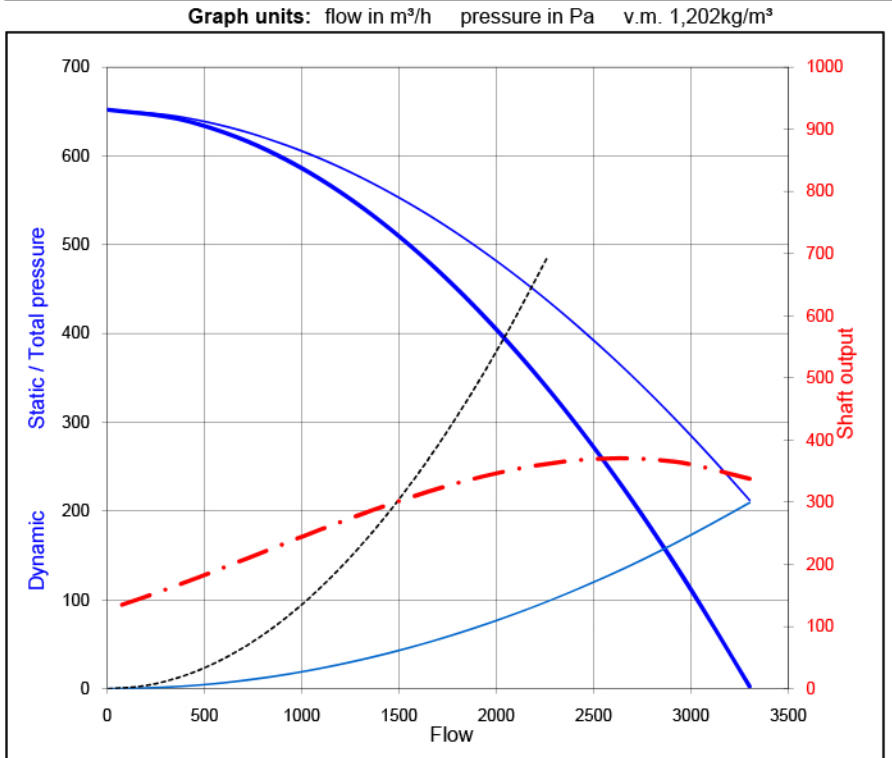
FAN DATA SHEET

Fantype: CV-250/1 V-2008 03o 1-0-1,4

Requested data		
flow	2050 m³/h	
static pressure	400 Pa	1,202 kg/m³

Client:	offer:
Project:	order:
Remarks:	

Operating data		
flow duty point		m³/h
pressure	static	400 Pa
	total	481 Pa
	dynamic	80,8 Pa
temperature medium		20 °C
specific mass		1,202 kg/m³
power duty point		350 Watt
efficiency		78 %
velocity	outlet	11,6 m/s
	inlet	11,6 m/s
motor	4 pole	tipspeed

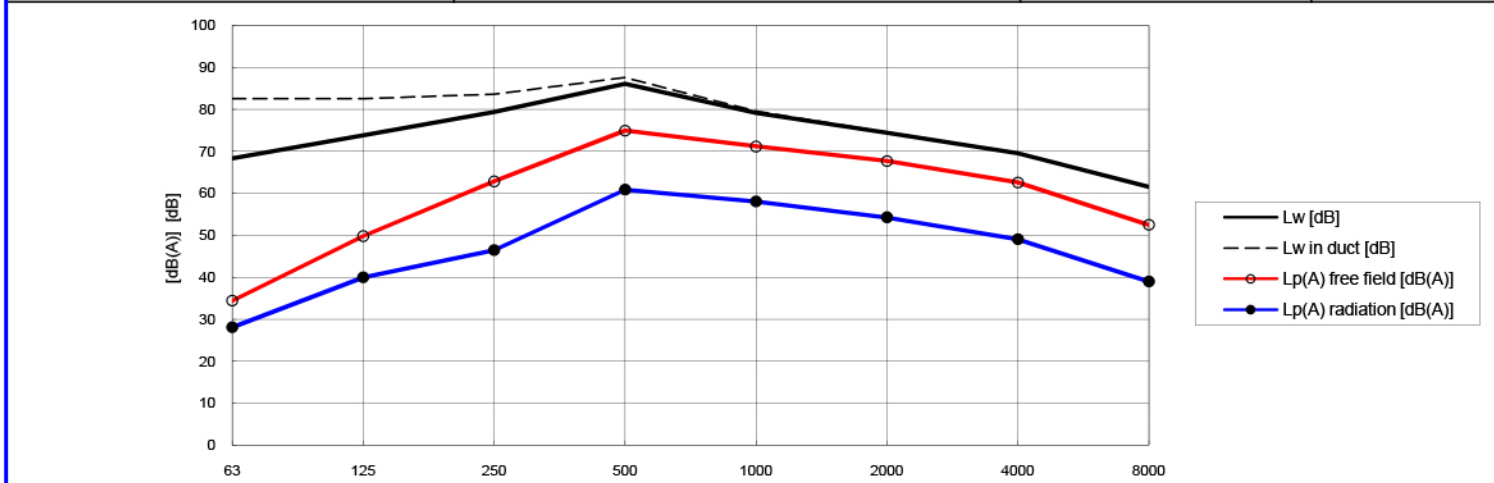


Dimensions			
impeller diam	405 mm	Inertia	0,15 kgm²
approx starting up time DOL sec			
type of blades	16x	backward	
material impeller	Alu 226	housing	Alu 226
blade frequency	387 Hz		
outlet	diameter	250 mm	
inlet	diameter	250 mm	

Electric data motor		
power	0,5 kW	4 poles
voltage	230V V	50 Hz
current, full load (In)	4,1 Amp	3,5 Is/In

Noise data

Amount	1	[-]	distance free field	1	[m]	Remarks				
Silencer	none		acoustic isolation		[mm]	no	+ reverberated	no	correction	no



			63	125	250	500	1000	2000	4000	8000Hz
Sound power level PWL	Lw	88,1	68	74	79	86	79	74	70	62
		85,3	42	58	71	83	79	76	71	60
Sound power level in duct PWL	Lw	91,1	83	83	84	88	80	75	70	62
	Lw(A)	86,6	57	66	75	84	80	76	71	60
Sound pressure level free field SPL free in- or outlet	Lp	80,2	60	66	71	78	71	67	62	54
	Lp(A)	77,4	34	50	63	75	71	68	63	53
Sound pressure level free field SPL radiation housing	Lp	66,5	54	56	55	64	58	53	48	40
	Lp(A)	63,6	28	40	46	61	58	54	49	39