



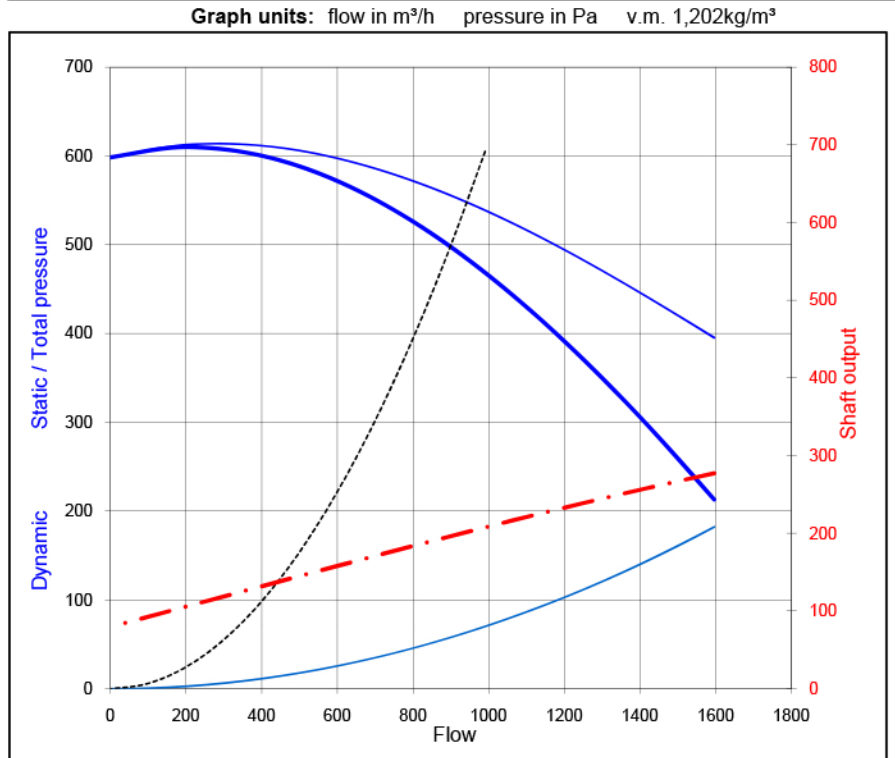
FAN DATA SHEET

Fantype: CV-180/1 V-2008 03o 1-0-1,4

Requested data		
flow	900 m³/h	
static pressure	500 Pa	1,202 kg/m³

Client:	offer:
Project:	order:
Remarks:	

Operating data		
flow duty point		m³/h
pressure	static	500 Pa
	total	558 Pa
	dynamic	57,9 Pa
temperature medium		20 °C
specific mass		1,202 kg/m³
power duty point		196 Watt
efficiency		71 %
velocity	outlet	9,8 m/s
	inlet	9,8 m/s
motor	4 pole	tipspeed 27 m/s

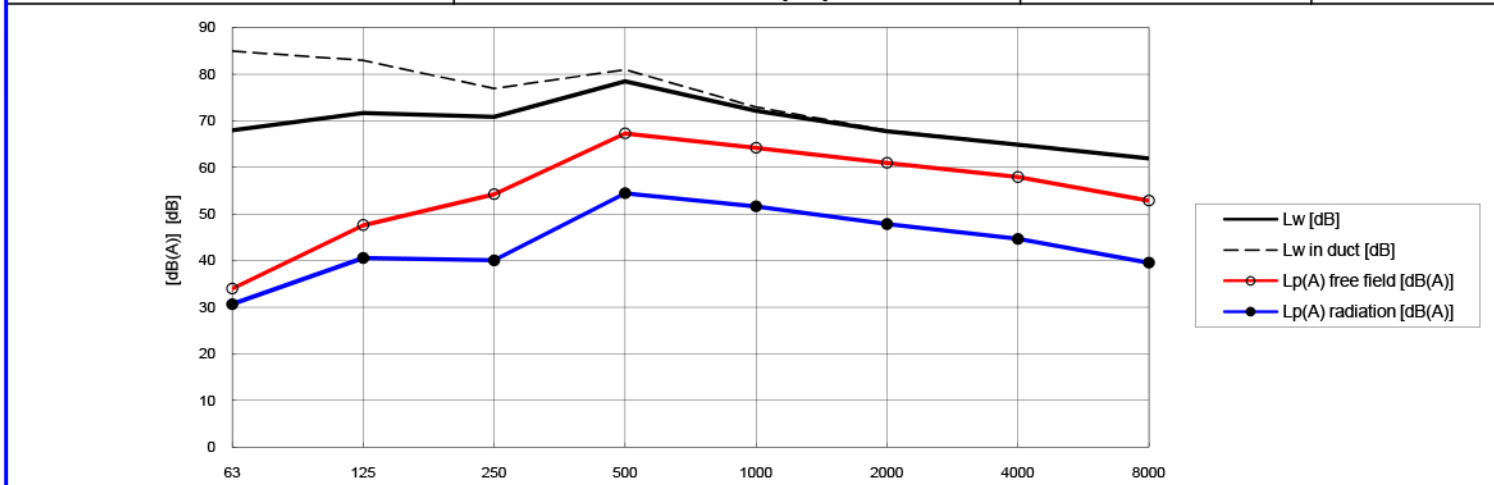


Dimensions			
impeller diam	360 mm	Inertia	0,09 kgm²
approx starting up time DOL			sec
type of blades	16x		radial
material impeller	Alu 226	housing	Alu 226
blade frequency			387 Hz
outlet		diameter	180 mm
inlet		diameter	180 mm

Electric data motor		
power	0,22 kW	4 poles
voltage	230V V	50 Hz
current, full load (In)	2,2 Amp	3,1 Is/In

Noise data

Amount	1 [-]	distance free field	1 [m]	Remarks			
Silencer	none	acoustic isolation	[mm]	no	+ reverberated	no	correction no



			63	125	250	500	1000	2000	4000	8000Hz	
Sound power level PWL	Lw	81,2	[dB]	68	72	71	78	72	68	65	62
		78,1	[dB(A)]	42	56	62	75	72	69	66	61
Sound power level in duct PWL	Lw	88,6	[dB]	85	83	77	81	73	68	65	62
	Lw(A)	80,2	[dB(A)]	59	67	68	78	73	69	66	61
Sound pressure level free field SPL free in- or outlet	Lp	73,2	[dB]	60	64	63	70	64	60	57	54
	Lp(A)	70,2	[dB(A)]	34	48	54	67	64	61	58	53
Sound pressure level free field SPL radiation housing	Lp	62,6	[dB]	57	57	49	58	52	47	44	41
	Lp(A)	57,4	[dB(A)]	31	41	40	54	52	48	45	40